

International student prospectus

www.autuni.ac.nz



WELCOME FROM THE VICE CHANCELLOR



University education is an exciting time in your life and AUT is an exciting university.

AUT is New Zealand's most contemporary university, with a unique profile reflecting our innovative approaches to teaching, learning and research. This is a university that is outward-looking, developing and adapting to the social, economic and technological realities which shape the world today. As a result AUT graduates are responsive to the needs of the modern, fast-changing and multi-skilled work place.

We understand the importance of building international relationships and we place a high value on the contribution that international students make to university life. We

currently have students from 65 different countries studying at here at AUT and they enjoy an inclusive learning environment – one which supports a diversity of people, cultures and ideas.

Welcome to this edition of our prospectus. If you want an education that will actively engage you and give you the foundation for a fulfilling career, then I invite you to select AUT to be your university.

A handwritten signature in black ink, reading 'Derek McCormack'.

Derek McCormack
Vice Chancellor

Auckland City





CONTENTS

WELCOME	P1
WHY NEW ZEALAND?	P3
WHY AUCKLAND?	P4
WHY AUT?	P4
STUDYING AT UNIVERSITY	P5
HOW TO APPLY TO STUDY AT AUT	P10
PATHWAYS TO THE UNIVERSITY	P11
FOUNDATION COURSES	P12
ENTRY REQUIREMENTS	P13
STUDENT SERVICES AND FACILITIES	P14
UNIVERSITY ENTRY EQUIVALENTS	P15
ESTIMATED LIVING COSTS	P18
ACCOMMODATION	P18
 FACULTY OF HEALTH AND ENVIRONMENTAL SCIENCES	 P21
APPLIED SCIENCES	P22
SPORT AND RECREATION	P22
FACULTY OF DESIGN AND CREATIVE TECHNOLOGIES	P24
COMPUTING AND MATHEMATICAL SCIENCES	P26
ART AND DESIGN	P28
COMMUNICATION STUDIES	P28
BUSINESS	P30
FACULTY OF APPLIED HUMANITIES	P32
SOCIAL SCIENCES	P34
EDUCATION	P34
HOSPITALITY AND TOURISM	P36
TE ARA POUTAMA (MAORI STUDIES)	P36
 PRE-DEPARTURE CHECKLIST	 P37
CODE OF PRACTICE	P37

WHY NEW ZEALAND?

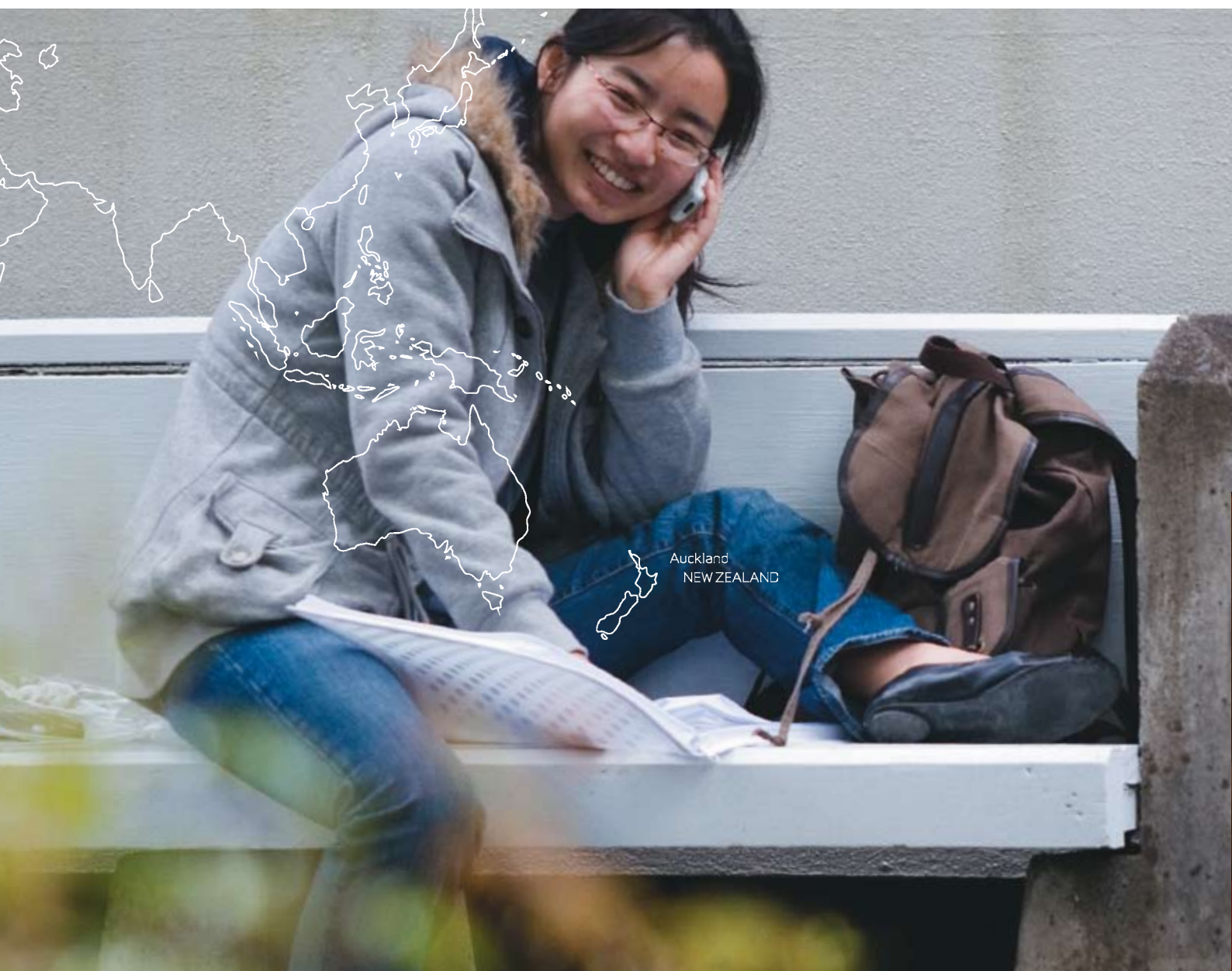
New Zealand is situated in the South Pacific and consists of two main islands, the North Island and the South Island, separated by a three-hour ferry ride or a short flight. New Zealand was the last landmass on earth to be discovered, making it the youngest country in the world. Since the Maori (our first nation people) arrived about 800 years ago many different cultures have made and call New Zealand home.

New Zealand is incomparable in its beauty and geographical diversity – from long golden sand beaches and lush native bush, to geothermal moonscapes, sparkling mountain glaciers and amazing wildlife. Regardless of the time of year, the climate is usually good enough to enable you to appreciate the scenery and experience the friendliness that Kiwis are world renowned for. And the great advantage of New Zealand

is that all of our diverse physical, cultural, and artistic landscapes are so close to each other!

New Zealand is a stable, English-speaking democracy, with a population of just over four million people, and is comparable in size to Great Britain and Japan. New Zealand society is ethnically diverse – made up of Maori, Pakeha (people of European descent) and many other minority groups including Pacific Islanders, Chinese, Koreans, and Indians. Our culture is unique, dynamic and sophisticated. It is a culture that celebrates the many different lifestyles we live, and the stories we have to tell.

New Zealand is located three hours to the east of Australia by plane, an overnight flight west of the USA, or a ten to twelve-hour direct flight from most Pacific rim countries.



WHY AUCKLAND?

Auckland is ranked among the world's top five cities to live and work in. It is located in the north of the North Island and is the largest and most culturally diverse of New Zealand's cities, with a population of more than 1.2 million people – 27% born in other countries. The urban area is twice the size of London.

The city is surrounded by two harbours – the Waitemata and the Manukau – and is often referred to as the "City of Sails" due to Aucklanders love for watersports and the sea. A cloak of rainforest covers the surrounding hills and dozens of dormant volcanic cones dot the landscape. The nearby Hauraki Gulf is home to several beautiful islands, easily accessible by ferry.

Auckland's climate is temperate and perfect for enjoying the many beautiful and clean beaches within easy reach of the city. Temperatures range from an

average of 24 degrees in summer (December to March) to 16 degrees in winter (June to August).

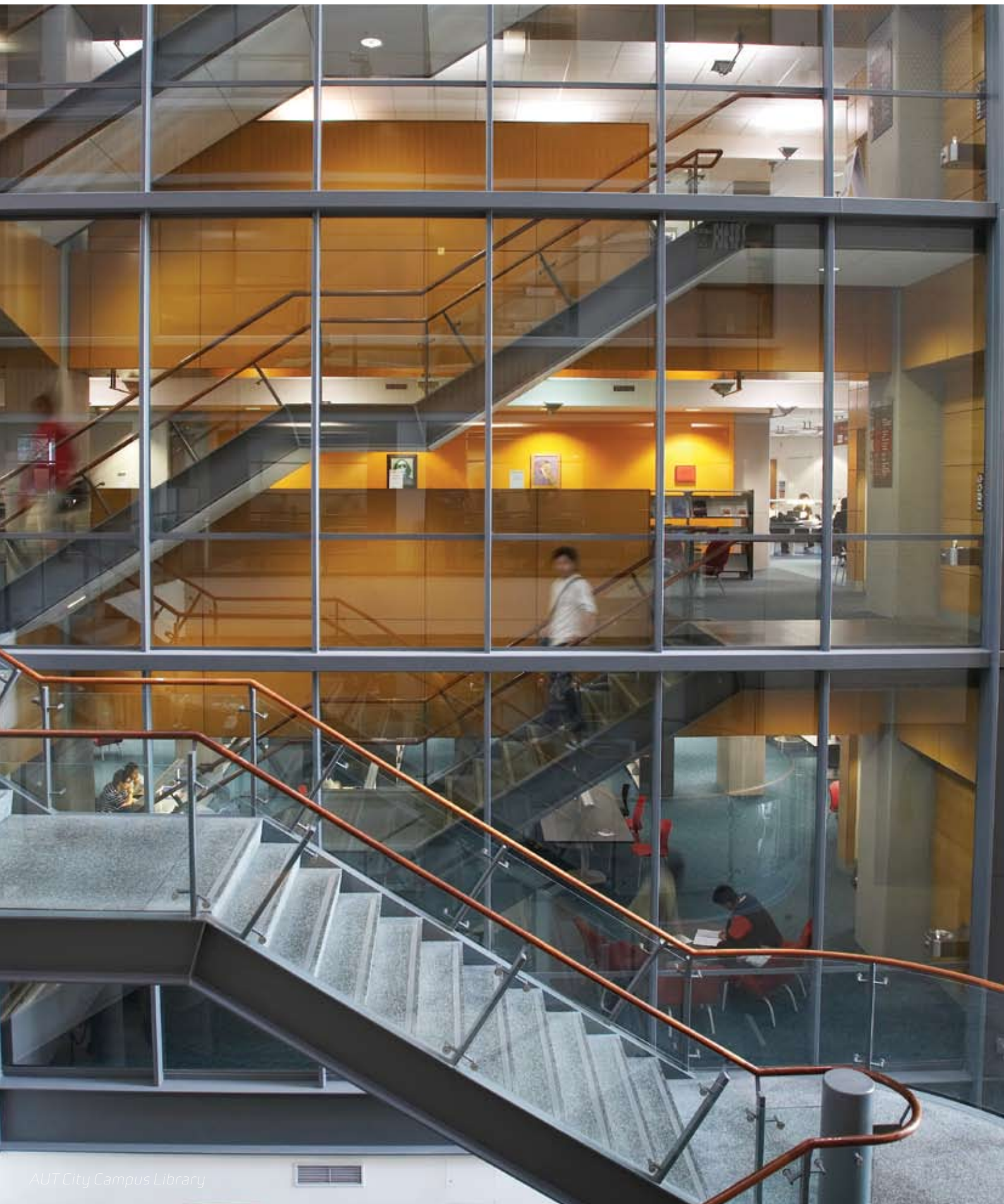
Auckland is a city of cultural diversity with a large Polynesian, Maori and Asian, as well as European, population. This diversity brings with it an abundance of unique cultural experiences and entertainment, a passion for the arts, food and fashion, and a bustling inner city.

Auckland is a vibrant and forward-thinking city which embraces the contributions of its many young people.

WHY AUT?

- We are internationally recognized and globally competitive - the university for the changing world
- Committed to internationalism and value our international students
- The highest graduate employment rate of any New Zealand university
- World-class facilities – from gyms to libraries and cafes
- Courses at all levels – from pre-degree to PhD level
- Two intakes each year (February and July)
- Close links with industry and the professions - we teach you the skills that are really needed
- Excellent research facilities and a strong research culture
- All our classes are personal and interactive
- An International Student Support Service team committed to helping you
- Two vibrant and well-positioned campuses – City Campus and North Shore Campus (across the Auckland Harbour Bridge)
- Over 4000 international students from more than 84 countries study at AUT
- We are accredited by the New Zealand government





AUT City Campus Library

Our mission is to foster excellence, equity and ethics in learning, teaching, research and scholarship, and in so doing serve our regional, national and international communities. If you choose AUT we need to introduce you to what this means.

RESEARCH

AUT places great emphasis on developing a culture in which the integration and application of research and learning are defining characteristics. The research performance of AUT University over the past five years has continued to exceed forecasts, as shown by the scope and quality of research programmes, by the expansion in postgraduate research, and by the application of research to major aspects of regional and national development. AUT takes pride in the many research contributions made by its students. Students are at the centre of our research aspirations and activities, and within AUT students have the chance to work and learn alongside some of New Zealand's most innovative and creative researchers.

AUT RESEARCH INSTITUTES AND CENTRES

AUT Research Institutes and Centres have been established and funded by the University to bring focus to research activity. The intention is to ensure that resources are concentrated into the areas where AUT has capability. The Institutes and Centres play an important training role for postgraduate students.

- Biotechnology Research Institute
- Engineering Research Institute
- Institute of Public Policy
- The Health and Rehabilitation Research Centre
- Knowledge Engineering and Discovery Research Institute
- National Institute for Public Health and Mental Health Research
- New Zealand Tourism Research Institute
- Earth and Oceanic Sciences Research Institute
- Creative Industries Research Institute
- Institute of Sport and Recreation Research New Zealand
- Computer and Information Sciences Research Cluster
- Centre for Radiophysics and Space Research
- Institute for Culture, Discourse and Communication
- The Centre for Work and Labour Market Studies

ACADEMIC YEAR

The academic year is divided into two semesters:
Semester one starts early February – ends June
(Mid-semester break is the last two weeks of April)
Semester two starts end July – ends end November
(Mid-semester break is the end of September/October)

SUMMER SCHOOL

This is designed to allow students to study outside of the standard semester programme. Students are able to make up papers or study new papers to accelerate their length of study.

Begins early December – ends early February
(Semester break is mid-December to mid-January)

**Please note not all programmes have summer school*

ORIENTATION

All students new to AUT must participate in Orientation. Orientation is scheduled two weeks before class starts. It includes sessions covering computer log-ins, time management, assignment preparation, course outlines, campus tours, city tours, introduction to services and facilities available, and the meeting of staff and student mentors as well as the opportunity of socialising with fellow students.

Exit surveys of graduate students show that students who attend orientation generally have greater academic success

STUDY INFORMATION

Each programme of study consists of papers that have point values. These are credited towards the total amount required to graduate from the programme of study. Students must carry a full course-load of papers, which equals 120 points each year.

There are two forms of assessments: examinations, or assignments/projects throughout the year.

TEACHING

AUT University is unique in its teaching methods as students are not taught in large lecture theatres. Group work and tutorials are an integral part of learning.

Many programmes have a cooperative aspect where students work in industry to gain practical experience.

The benefits of small classes are that academic staff know you and are readily accessible.

GRADING SYSTEMS

The final outcome of the assessment of a paper is recorded as follows:

A+	A	A-	Pass with distinction
B+	B	B-	Pass with merit
C+	C	C-	Pass
M			Pass with Merit
P			Pass



AUT School of Art and Design, City Campus

RECOGNITION OF PRIOR LEARNING (RPL) – ACADEMIC CREDIT

AUT awards credit for formal study undertaken in recognized tertiary institutions in New Zealand.

Tertiary study from an overseas qualification must be assessed as equivalent in content and standard to papers taught at AUT.

An application for credit must include an official outline of the qualification studied as well as specific descriptions of course content and individual papers studied. The application must be supported by certified copies of original documents.

If your application for academic credit is successful you will obtain credit points for the relevant paper or papers. This means you will not have to enroll and complete those papers at AUT.

If you believe you are entitled to credit for your previous studies complete the Recognition of Prior Learning form which is available at www.aut.ac.nz/international_students/application/downloads.html

There may be a cost for RPL assessments.

Please be aware that students must undertake a minimum of 80% of a full-time study load to comply with the conditions of their student permit. (80% of 120 points = 64 points for 1 year, 80% of 60 points = 48 points per semester).

STUDY ABROAD

This programme is for students enrolled at universities overseas. They are able to come and study at AUT for one or two semesters, choose from a wide range of subjects and have credits transferred back to their home university. For further details visit www.autstudyabroad.info

STUDY EXCHANGE

This is an opportunity for students to live in New Zealand and study at AUT while gaining credit towards their degree at their own university. AUT has student exchange agreements with partner institutions in many countries including Canada, China, France, Germany, Japan, Norway, Sweden, the UK and the USA.

You will find a list of exchange universities and details at www.autexchange.info

SCHOLARSHIPS AND AWARDS

Each year a number of students are able to study with the assistance of the following scholarships:

- AUT Vice-Chancellors Doctoral Scholarships
www.phdscholar.ac.nz
- New Zealand Development Scholarships (NZDS) and Commonwealth Scholarships
www.nzaid.govt.nz
- New Zealand International Doctoral Research Scholarships (NZIDRS)
www.newzealandeducated.com
- New Zealand International Undergraduate Fees Scholarships (NZIUFS)
www.newzealandeducated.com
- French (including French dependencies) and German Postgraduate students

Under a reciprocal agreement between the NZ, French and German governments students from these countries are able to study in NZ paying domestic fees. All other costs must be met by the student.

WORKING IN NEW ZEALAND / VISA INFORMATION

Students can work 20 hours per week during the academic year and full-time during holiday periods. Students should ask their local agent/educational consultant or nearest New Zealand Embassy for details of visa requirements as these may change from time to time. Full details of visa and permit requirements, advice on rights to employment in New Zealand while studying, and reporting requirements are available through the NZIS website.

www.immigration.govt.nz

New and returning student visas are processed during Orientation at the AUT Student Support Centre.

Please note that students can not earn enough to fund their studies by working.



HOW TO APPLY TO STUDY AT AUT

To study at AUT students need to apply directly to the University or through an AUT Registered Agent. We recommend applications are submitted at least two months prior to semester start date.

1 Applicants must complete the International Student application form, ensuring all sections are completed in full, and that the programme of choice and majors are clearly indicated.

Please attach:

- Certified copy of English language test (Academic ELTS, TOEFL or recognized equivalent. Note: these results are valid for two years from exam date)
- Certified copies of all relevant academic documents (transcripts as well as award certificate)
- Certified copy of birth certificate or passport
- Evidence of relevant work experience (including references)
- One passport-sized photograph

Please email autinternational.centre@aut.ac.nz to check if there are any additional requirements for entry to your programme of choice.

2 If you are submitting your application from overseas for the upcoming semester it will take up to one week to assess (post-graduate will take longer). When we receive your application you will receive an acknowledgement email/letter.

3 Successful applicants will receive an Offer of Place letter, which will give advice on tuition fees, enrolment fee, insurance fees, date of payment, methods of payment and a copy of the University's refund policy.

4 To accept an Offer of Place, applicants must sign one copy of the Offer of Place and return it, with full payment of fees, by the due date.

5 When your fees have been received, a receipt will be issued. This must be presented to the nearest New Zealand Immigration Services office with a copy of your Offer of Place in order to obtain a student permit/visa.

PAYMENT OF FEES

Receiving an Offer of Place does not guarantee you a place. To guarantee you a place on your programme of choice, you must pay your tuition, enrolment and insurance fees by the due date. Please note some programmes have a limited intake, so do not delay making payment.

Please note: instructions on how to pay will be on your offer of place.

AUT APPLICATION ADDRESS

Mail to:
Registry Services
AUT University
Private Bag 9200
Auckland 1142
New Zealand

Courier to:
AUT University
Level 2 (ground entry)
WA Building
55 Wellesley Street East
Auckland Central
New Zealand

ENGLISH LANGUAGE STUDIES

For students who do not meet the entry requirements, the School of Languages in the Faculty of Applied Humanities offers three English for Academic Study preparation programmes. These offer students a solid background in the language skills, research processes and critical thinking required for academic study in a New Zealand University.

The programmes are:

- Diploma in English Language
- Certificate in English for Academic Study
- Certificate in Academic English

Students who do not meet the English entry requirements can also enrol in one of the English programmes taught through AUT International House.



AUT INTERNATIONAL HOUSE

- AUT International House is located in the heart of downtown Auckland close to the main AUT campus. It is a modern, spacious school with the latest technological equipment.
- Students have use of all AUT facilities such as libraries, the learning centre, medical centre and sports facilities.
- Residential accommodation is available for students in the Wellesley Student Apartments located only a 5-minute walk from AUT International House.

Entrance requirements

- Minimum age is 18
- Oral and written placement test on arrival
- Monthly start dates

Course information

- General English classes at all levels, except for beginners.
- Academic GIE programme*
- Business English
- IELTS/EAP (English for Academic Purposes) – GIE*
- Cambridge Examination Courses

**The GIE programme (English with an academic and ielts focus) is a full-time university preparation and study skills course. If successfully completed the gie can provide a pathway into a range of aut university programmes. For business faculty programmes it is not necessary to sit the ielts exam if you have successfully completed the gie programme.*

Please visit our website for more information on courses, dates and fees:

www.autinternationalhouse.info

email: inhouse@aut.ac.nz

AUT certificates and diplomas

- These introductory programmes provide a solid foundation for students who do not reach the degree entry requirements. Lengths of programmes range from one semester to two years.
- Students are able to staircase their academic study from certificate to diploma to degree.



Students at AUT International House

FOUNDATION COURSES

AUT FOUNDATION CERTIFICATE

Norton College



The AUT University Foundation Certificate is delivered by Norton College, an independent education provider managed by Academic Colleges Group (ACG).

- Located in the central business district, a 5-minute walk to AUT City Campus
- Foundation certificates offering a wide range of subjects: English, Tertiary Preparation Studies, Introduction to New Zealand Culture & Society, Accounting, Economics, Mathematics, Chemistry, Biology, Design, Drawing, Electromechanics, History and Statistics
- Successful completion of prescribed grades guarantees entry to an appropriate undergraduate degree (with the exception of Nursing)
- Eight-month to twelve-month duration
- Three starting dates per year – January, May and September
- Provides focus in specialist areas from the start of the programme
- Curriculum includes core training in English and independent learning skills
- Students have access to AUT University's library, learning centre, and sports facilities
- ACG has one of the best NZ records in international education.

www.acgedu.com

admissions@acgedu.com

TAYLOR'S AUCKLAND FOUNDATION YEAR

Taylor's College

Taylor's College

HIGH SCHOOL AND UNIVERSITY PREPARATION

Taylor's College is one of the leading university preparation specialists in New Zealand and Australia. The Taylor's Auckland Foundation Year (TAFY) has been specifically developed to prepare international students for entry into undergraduate programmes at AUT University. Entrance is based on the academic and English proficiency requirements published in the Taylor's prospectus.

The college campus is located in the heart of Auckland City and includes fully-equipped science laboratories, computer facilities, student welfare team, library common room, health-centre and tertiary counsellor.

For more information please contact:

info@taylorscollege.ac.nz

www.taylorscollege.ac.nz



AUT City Campus

ENTRY REQUIREMENTS

BACHELOR DEGREE PROGRAMMES

All applicants are required to meet the University's minimum level of entry to study a bachelors degree. However, because of competition for places, entry level above the minimum may be required for admission to some programmes.

POSTGRADUATE PROGRAMMES

Entry into AUT postgraduate and masters programmes may vary between Faculties. Basic entry requirements are a successfully completed bachelors degree in the same area of study from a recognised university and a recognised English Language test that meets the language requirement. Applicants may also be required to provide evidence of relevant work/research experience. For postgraduate applications where the student will be undertaking a thesis, a research proposal will be required.

ENGLISH ENTRY REQUIREMENTS

All AUT lectures and classes are taught in English. Applicants must demonstrate competence in English by meeting the AUT English proficiency requirements. Students who do not have English as their first language must be able to show evidence of their English language skills.

Accepted evidence must be one of the following achieved within the *past two years*:

1 PRE-DEGREE - CERTIFICATE

IELTS (Academic) score - **Overall score of 5.5 with no band less than 5.0**

TOEFL score:

Paper-based - total score of 450 with minimum of 3.5 in Test of Written English (TWE) *or*

Computer-based - total score of 133 with minimum Essay rating of 3.5 *or*

Internet-based - total score of 46

PRE-DEGREE - DIPLOMA

IELTS (Academic) score - **Overall score of 6.0 with no band less than 5.5 or overall 5.5 with no band less than 5.0**

TOEFL score:

Paper-based - total score of 550 with minimum of 4.0 in Test of Written English (TWE) *or*

Computer-based - total score of 213 with minimum Essay rating of 4.0 *or*

Internet-based - total score of 80

UNDERGRADUATE DEGREE

IELTS (Academic) score - **Overall score of 6.0 with no band less than 5.5**

TOEFL score:

Paper-based - total score of 550 with minimum of 4.0 in Test of Written English (TWE) *or*

Computer-based - total score of 213 with minimum Essay rating of 4.0 *or*

Internet-based - total score of 80

POSTGRADUATE

IELTS (Academic) score - **Overall band score of 6.5 & band score of 6.0 in all bands**

TOEFL score:

Paper-based - total score of 575 with minimum of 4.5 in Test of Written English (TWE) *or*

Computer-based - total score of 233 with minimum Essay rating of 4.5 *or*

Internet-based - total score of 90

2 NEW ZEALAND HIGH SCHOOL GRADUATES

NCEA with a minimum of 8 credits at level 2 or higher in English (4 credits in Reading and 4 credits in Writing). Please note that students entering through NCEA are not permitted to submit an IELTS in lieu of NCEA.

3 AUT CERTIFICATE IN ENGLISH FOR ACADEMIC STUDIES

Minimum of B or B+ in all subjects (dependent on selected programme) and a recommendation from Programme leader.

Please note some programmes may require a higher level of English language than the minimum specified. Contact the International Centre for further details.

STUDENT SERVICES AND FACILITIES

AUT University has all the services you need to make your transition from your home country an easy one and to progress you through to being a confident, successful and happy student.

INTERNATIONAL CENTRE

- This is the first point of contact for international students needing help and information.
- Located on campus with a team of friendly people to help you with applications and enrolment.
- Offers workshops and counselling on programme choices

INTERNATIONAL STUDENT SUPPORT SERVICES (ISSS)

This team of friendly people welcomes you at Orientation and is here to help you with adjusting and learning in a new culture. Assistance is offered with student visas, permits (done on campus), and any homesickness and culture shock you may experience. Social events are also organized throughout the year to make your time at AUT an enjoyable one.

The team has a 24-hour emergency line

STUDENT SERVICES

Student Services provide the information, help and support you need to successfully navigate your time at AUT University. Our team can provide assistance with any aspect of student life and help you make the most of your time at AUT.

Some of the Student Services we offer are:

- Career Centre
- Health Clinic
- Financial Services
- Chinese Centre
- Counselling
- Learning Support
- Student Mentors
- Libraries
- Fitness Centres
- Computer Suites
- Cafes & Restaurants
- Student Lounges
- Disability Resource Service
- Student Clubs and Sporting Teams

See also: www.ausm.org.nz and www.aut.ac.nz/students/student_services



North Shore Campus Library

UNIVERSITY ENTRY EQUIVALENTS

DIPLOMA	UNDERGRADUATE DEGREE
<i>Equivalent to NZ year 12 (6th form) or equivalent</i>	<i>Equivalent to NZ year 13 or equivalent</i>
CANADA → Grade 12 certificate	CANADA → Average of 60% across 6 subjects (including english in the grade 12 high school certificate)
CHINA → Year 3 certificate of graduation, minimum 75%	CHINA → Successful completion of one year in a recognised university
FIJI → Fiji school leaving certificate	FIJI → Fiji form 7, aggregate over 4 subjects of 250, with a minimum of 50 in english
FRANCE	FRANCE → Baccalaureat de L'Enseignement du Second Degre with a minimum of 10 → Diplome de Bachelier de L'Enseignement du Second Degre with a minimum of 10
GCE	GCE → For A levels taken in countries other than UK/Hong Kong at least 3 'A' levels with one grade C or above. A result in general studies cannot be included
GERMANY → Mittlere reife/realschulabschluss	GERMANY → Successful completion of senior high school - abitur
HONG KONG → HK certificate of education	HONG KONG → Three Hong Kong advanced level passes at grade C or higher
INDIA → Higher secondary certificate (standard xii), minimum 60%	INDIA → All India senior secondary school certificate minimum average 75% in best 4 subjects and minimum of 60% in english
	INTERNATIONAL BACCALAUREATE Successful completion of at least 24 points. Must pass extended essay.
INDONESIA → SMU 7.0	INDONESIA → Successful completion of one year's tertiary study → SMU, minimum 8.5
JAPAN → Upper secondary school leaving certificate	JAPAN → Successful completion of high school diploma with a B average → Successful completion of one year in a recognised university → Successful completion of a junior college degree diploma of 2-3 years duration
KOREA → High school diploma	KOREA → A minimum of 250 in the Korean university entrance examination
MALAYSIA → SPM, or → Chinese unified exams	MALAYSIA → STPM with 3 passes with one C or better → A maximum of 15 points over 6 academic subjects in the Unified Examination Certificate → A levels with at least 3 results with 1 grade at level C or above → SAM with a tertiary entrance rank of 74.0 → Canadian pre-university exam → Australian matriculation

DIPLOMA	UNDERGRADUATE DEGREE
<i>Equivalent to NZ year 12 (6th form) or equivalent</i>	<i>Equivalent to NZ year 13 or equivalent</i>
MEXICO	MEXICO → Successful completion of one year's tertiary study
NEPAL	NEPAL → Bachelor degree with upper second division
NORWAY	NORWAY → Successful completion of videregaende skole
PAKISTAN	→ Successful completion of one year's tertiary study
PHILLIPINES	PHILLIPINES → Successful completion of one year's tertiary education
RUSSIA → Certificate of secondary education; or → Certificate of maturity	RUSSIA → Successful completion of one year's tertiary study
SAUDI ARABIA	SAUDI ARABIA → Successful completion of one year's tertiary study
SINGAPORE → CEO O level in 4 subjects	SINGAPORE → GCE A levels, with 3 passes
SRI LANKA → GCE O levels	SRI LANKA → GCE A levels, with one C, or better
SWEDEN	SWEDEN → Successful completion of avgangsbetyg → Successful completion of student examen → Successful completion of slutbetyg from a gymnasium
TAIWAN → Senior high school	TAIWAN → Successful completion of senior high school and a junior 5 year college diploma → Successful completion of one year's tertiary study
THAILAND → Matayom 6	THAILAND → Matayom 6 with a gpa of 2.5 Or higher, with a relevant subject mix → Successful completion of one year's tertiary study
UAE → 70% Or better in tawajihyya (secondary school certificate)	UAE → Successful completion of one year's tertiary study
UK → GCSE (higher grades)	UK → Successful completion of GCE A levels
USA → High school diploma	USA → High school diploma plus SAT
VIETNAM → Universal graduation with a grade of 7 when out of 10 or 30 when out of 40	VIETNAM → Successful completion of one year's tertiary study



Wellesley Student Apartments, City Campus

ESTIMATED LIVING COSTS PER STUDY YEAR (38 weeks)

DESCRIPTION	ESTIMATE NZ\$	ITEM	COST NZ\$
Rent.....	5700	Takeaway meal.....	6 - 20
Food	3800	Soft drink	2
Power.....	600	Beer.....	6
Phone (<i>rental, local calls only</i>).....	380	Coffee.....	3.50
Insurance	445	Mobile phone (<i>new</i>).....	250
Books and materials.....	650	Simcard	35
Travel (local)	200	DVD hire.....	5 - 10
TOTAL	\$11775	Cinema.....	13
		Pre-paid international phone cards.....	30
		(<i>5-6 hrs calling time per month</i>)	

ACCOMMODATION

Once you've made the decision to study with us it is very important that you book your accommodation as soon as possible.

AUT HALLS OF RESIDENCE

All AUT Halls of Residence are assessed by the University and are suitable for international students studying at AUT.

- Halls are located on campus and require a contract for one semester
- Single rooms and apartment style accommodation are available
- There is 24-hour security surveillance
- On-site managers
- Linen packages available
- Internet connections
- TV lounges and common areas
- Operate on a first-come first-served basis

WELLESLEY STUDENT APARTMENTS

A new high-rise building which consists of 4 or 5 bedroom furnished apartments with their own bathrooms and kitchens.

AKORANGA STUDENT VILLAGE

A complex of 36 townhouse-type apartments set on landscaped grounds and located on the North Shore campus, over the Auckland Harbour Bridge.

HOMESTAY

Boarding is arranged with a New Zealand family. The student will be provided with a furnished bedroom, two meals per day and shared use of house facilities. Students are expected to participate in family activities. This can be a rewarding way to experience New Zealand culture and lifestyle.

www.kiwhihomestay.co.nz

Email: suekev@xtra.co.nz

For further accommodation information visit www.autinternational.info

** Students Under 18 years of Age - if you will be under the age of 18 when you start studying at AUT University please contact the International Student Support Centre - elberta.chan@aut.ac.nz to discuss your accommodation options.*

All accommodation listed is visited and audited by AUT staff.





WHAT CAN I STUDY?

AUT offers many programmes and choices for study. In the following pages you will find information on all the programmes we offer.



The Faculty of Health and Environmental Sciences encompasses research and qualifications in the fields of Applied Sciences, Sport and Recreation and Health Studies. The Faculty is located at AUT's North Shore Campus, across the Harbour Bridge. The Faculty is New Zealand's largest and most diverse health and environmental science education provider.

The Faculty of Health and Environmental Sciences is home to the internationally recognised Centre for Physical Rehabilitation Research, and the National Institute for Public Health Research that incorporates research programmes focused on Pacific Health, Asian Health, Problem Gambling and Health of Older People. The Faculty also supports the National Centre for Health and Social Ethics, the Centre for Sport Performance Research, the Centre for Midwifery and Women's Health, and the interdisciplinary Trauma Research Unit.

HEALTH STUDIES

The health-related programmes prepare students to enter and excel in a wide range of health and health-related professions. The postgraduate programmes help ensure the health workforce remains flexible and up to date with the latest developments in knowledge, technology and professional practice.

DEGREES AND GRADUATE DIPLOMAS

Degrees are three years' full-time study unless otherwise specified.

BACHELOR OF HEALTH SCIENCE MAJORS:

- Applied Mental Health
- Health Promotion
- Midwifery
- Nursing
- Occupational Therapy
- Oral Health
- Paramedic
- Physiotherapy (4 Years)
- Podiatry
- Psychology

BACHELOR OF HEALTH SCIENCE DOUBLE MAJORS:

- Applied Mental Health + Psychology
- Health Promotion + Psychology

CONJOINT DEGREES

Psychology + Business (4 years)

GRADUATE DIPLOMAS

Graduate Diploma in Addictions (1 year)
 Graduate Diploma in Health Science (1 year)
 Graduate Diploma in Psychosocial Studies (1 year)
 Graduate Diploma in Child Mental Health (1 year)

POSTGRADUATE QUALIFICATIONS

Bachelor of Health Science (Honours) (1 year)
 Postgraduate Diploma in Health Science (1 year)
 Postgraduate Diploma in Public Health (1 year)
 Postgraduate Diploma in Counselling Psychology (1 year)
 Master of Health Science (2 years)
 Master of Public Health (2 years)
 Master of Emergency Management (2 years)
 Master of Health Practice (18 months)
 Doctor of Health Science (3 years)

CERTIFICATES AND DIPLOMAS

Certificate in Health Studies (1 year)
 Diploma in Violence and Trauma Studies (1 year)
 Diploma in Mental Health Support Work (1 year)

APPLIED SCIENCES

If you have an interest in the way science is applied to the world around us – from the way we eat, to the way our bodies operate and the industries we work in – then there's a place for you at AUT University.

Our Research Centres are Body Composition and Metabolism, Centre for Applied Science International Development, Earth and Oceanic Sciences and Glycoscience.

DEGREES AND GRADUATE DIPLOMAS

Degrees are three years' full-time study unless otherwise specified.

BACHELOR OF APPLIED SCIENCE MAJORS:

- Applied Chemistry
- Applied Mathematics
- Aquaculture
- Applied Microbiology
- Environmental Studies
- Food Science
- Health Protection
- Human Anatomy and Physiology

Bachelor of Medical Laboratory Science (4 years)

CONJOINT DEGREES

Bachelor of Applied Science + Bachelor of Business (4 years)

GRADUATE DIPLOMAS

Graduate Diploma in Applied Science (1 year)

POSTGRADUATE QUALIFICATIONS

Bachelor of Applied Science (Honours) (1 Year)

Postgraduate Diploma in Applied Science (1 Year)

Master of Applied Science (2 Years)

CERTIFICATES AND DIPLOMAS

Certificate in Applied Science (1 year)

Diploma in Applied Science (1 year)

SPORT AND RECREATION

We have developed new programmes and advanced qualifications that recognise the world-wide revolution in sports and fitness. Many of our staff are leaders in their fields and their skills are in demand around the world. Our close relationships with commercial and community organizations mean our students are exposed to the latest trends in sport, fitness, recreation and health.

The Institute of Sport and Recreation New Zealand (ISRNZ) is a multi-disciplinary research facility within AUT's School of Sport and Recreation. The ISRNZ is a flagship for the research activities of the School and provides a training ground for applied sports scientists.

The streams of the ISRNZ are:

- Exercise science – Physical conditioning
- Exercise science – Human movement
- Exercise science – Exercise physiology
- Physical activity, nutrition and health
- Holistic therapy
- Coaching and physical education
- Sport and recreation management
- Professional practice
- Dance and drama
- Outdoors

DEGREES

Degrees are three years' full-time study unless otherwise specified.

Bachelor of Sport and Recreation
Bachelor of Dance

CONJOINT DEGREES

Bachelor of Sport and Recreation + Bachelor of Business (4 years)

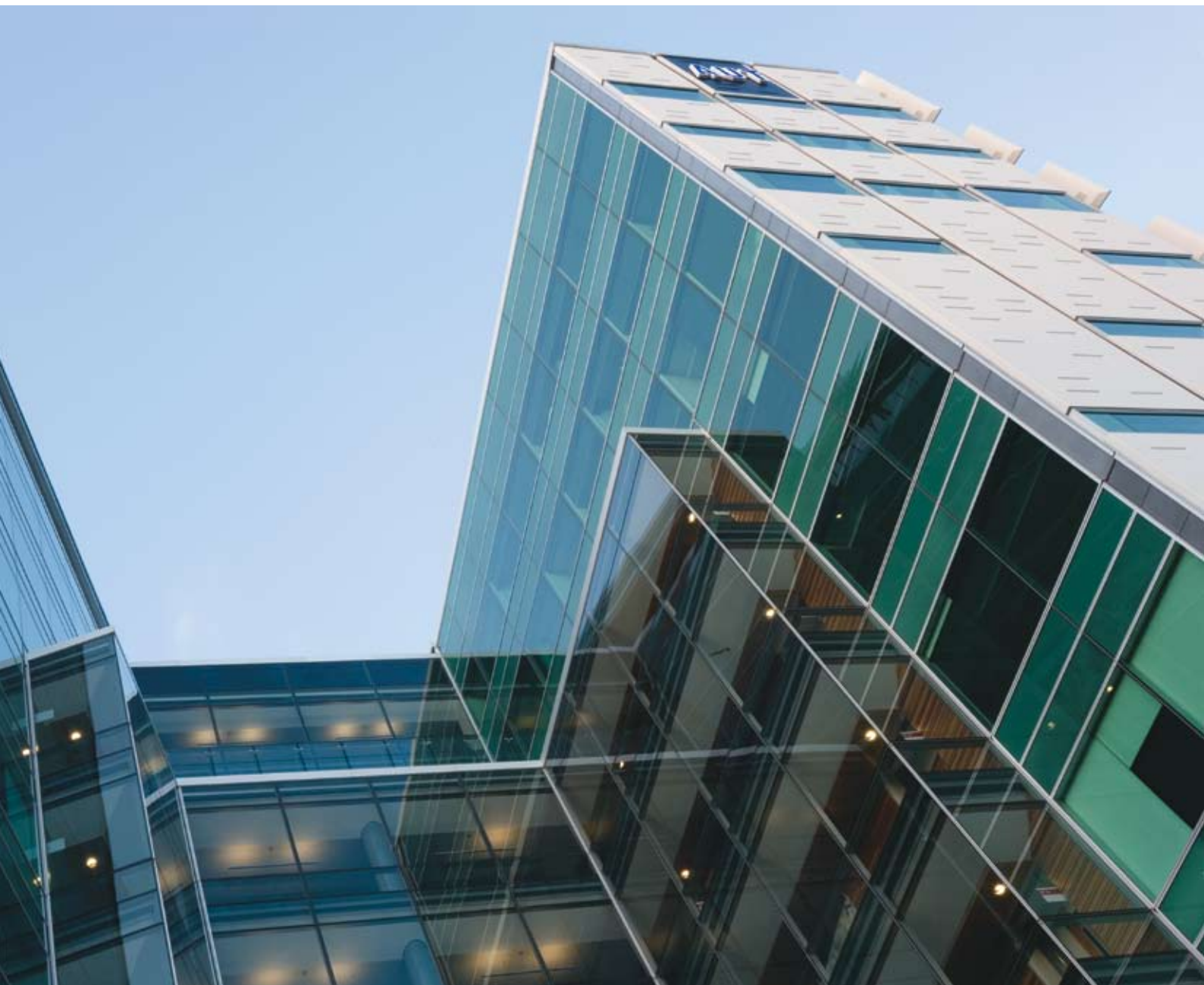
CERTIFICATES AND DIPLOMAS

Diploma in Sport and Recreation (1 year)

Diploma in Fitness Training (1 year)

Diploma in Wellness Therapies (2 years)

Diploma in Outdoor Recreation Leadership (2 years)



JIA BO HUA (JACK), BEIJING, CHINA
Bachelor of Engineering (Mechanical)

THIS is my third year studying at AUT. I first heard about AUT when I studied a graphic design foundation course in Auckland in 2005. I heard AUT's design school was the best in Auckland.

I decided to study at AUT because I think it is a very creative and dynamic university. The classes are small so everyone has a chance to talk to the tutors and ask questions. My lecturers and tutors are actively involved in my learning and also offer me extra support outside class time.

I like the convenience of living in Auckland, and being able to walk everywhere in the city. And I like being able to stand on a hill and look out to the far horizon without my view being blocked by many tall buildings.

The Faculty of Design and Creative Technologies encompasses the schools of Engineering, Computing and Mathematical Sciences, Art and Design, Communication Studies and an Interdisciplinary Unit offering programmes in Creative Technologies. The Faculty is an exciting and dynamic place in which to study. The range of highly sought-after qualifications and career opportunities for Design and Creative Technologies graduates is equally diverse and exciting. These industries are the fastest growing sectors of the new economy, and graduates will be entering a globalised workforce where their creative talents, skills, knowledge and experience gained at AUT will set them apart.

ENGINEERING

The Bachelor of Engineering (Honours) is accredited under the Washington Accord through the Institution of Professional Engineers of New Zealand.

The School has many areas of research, such as: Structural Vibrations, Flow-Induced Vibrations, Biomechanics, Smart Polymers, Automatic Control Systems, Mechanical Design, Stress Analysis, Materials and Manufacturing Processes, Mechanical Fault Diagnostics, Thermofluid Systems, Air Conditioning, Modelling and Simulation of Dynamic Systems, Signal Processing, Communications and Computer Systems Engineering, Lighting and Illumination

DEGREES

Degrees are three years' full-time study unless specified otherwise.

Bachelor of Engineering Technology – Computer and Mobile Systems

Bachelor of Engineering Technology – Mechanical

Bachelor of Engineering Technology – Electrical

Bachelor of Engineering Technology – Electronic

Bachelor of Engineering Technology – Network and Communication

Bachelor of Engineering (Honours) - Electrical and Electronic (4 years)

Bachelor of Engineering (Honours) – Mechanical (4 years)

POSTGRADUATE STUDY

Postgraduate Diploma in Engineering (1 year)

Master of Construction Management (1 year)

Master of Engineering Studies (1 year)

Master of Engineering (1 year)

Master of Philosophy (1 year)

Doctor of Philosophy (3 years)

CERTIFICATE AND DIPLOMAS

Certificate in Engineering Technology [Speciality] (1 year)

→ Mechanical

→ Product Design

→ Maintenance

Diploma in Electrotechnology [Speciality] (2 years)

→ Computer Engineering

→ Electrical Engineering

→ Electronics Engineering

→ Industrial Measurement and Control

→ Telecommunications Engineering

Diploma in Engineering [Speciality] (2 years)

→ Mechanical

→ Production

Diploma in Competitive Manufacturing (1 year)



ABHISHEK BHOWMICK, MUMBAI, INDIA
Master of Philosophy in Engineering Research

AUT has given me the opportunity to work and learn alongside some of New Zealand's most innovative and creative researchers. My decision to come to AUT was based on the University's Research Development Plan, which values the dynamic integration of research and engagement while nurturing the educational aspirations of the diverse groups it serves.

AUT offers an innovative approach to research and its commercialisation, a great degree of autonomy with respect to research methodology and state-of-the-art research infrastructure.

The concept of 'New World Thinking' gives New Zealand that extra edge and I've found New Zealanders to be very honest and hospitable.

I am truly enjoying embarking on this new and dynamic chapter in my life.

JESAL ASHAR, MUMBAI, INDIA
Master of Philosophy in Neural Networks and Machining

I heard about AUT through education fairs in India, my own research about NZ universities, and through friends. I decided to come to AUT because it offered me the best combination of research and learning, which I can effectively use as a platform to further my academic career.

I enjoy the environment of AUT and being able to interact with people from all over the world. And also the knowledge that my degree is well recognised throughout the country and the rest of the world.

I enjoy the cosmopolitan nature, outdoor activities and employment opportunities Auckland has to offer.



The School of Computing and Mathematical Sciences offers a curriculum that is shaped by the latest advances in research. We want to help you to become one of the next generation of professionals who create and use advances in science and technology to build, deliver and support computing, information and mathematical solutions that make our lives more enjoyable, in both work and play.

The School has six internationally prominent research groups:

- Knowledge Engineering and Discover Research Institute (KEDRI) – Adaptive pattern recognition systems, bioinformatics, data mining and decision support, neuro-computing and computational intelligence, neuroinformatics and brain study and research laboratory for English and Maori Translation systems.
- Centre for Artificial Intelligence (CAIR) – robotics, language.
- Software Engineering Research Lab (SERL) – advanced communications techniques, intelligent agents for information retrieval, data mining and geospatial referenced data.
- Centre for Research on Information Systems Management (CRISM) – e-business, the management of information systems, usability research and network and security.
- Geoinformatics Research Group
- Centre for Radiophysics and Space Research

DEGREES AND GRADUATE DIPLOMAS

Degrees are three years' full-time study unless specified otherwise.

Bachelor of Computer and Information Sciences
Bachelor of Business – IT and eBusiness majors

BACHELOR OF MATHEMATICAL SCIENCES MAJORS:

- Applied Mathematics
- Computer Science
- Statistics

CONJOINT DEGREES

Bachelor of Computer and Information Sciences +
Bachelor of Business (4 years)
Bachelor of Computer and Information Sciences +
Bachelor of Applied Science (4 years)
Bachelor of Arts + Bachelor of Computer and
Information Sciences (4 years)

GRADUATE DIPLOMAS

Graduate Diploma in Computer and Information
Sciences (1 year)
Graduate Diploma in Mathematical Sciences (1 year)

POSTGRADUATE STUDY

Bachelor of Computer and Information Sciences
(Honours) (1 year)
Postgraduate Diploma in Computer and Information
Sciences (1 year)
Master of Computer and Information Sciences (2 years)
Master of Philosophy (1 year)
Doctor of Philosophy (3 years)

DIPLOMA

Diploma in Information Technology (2 years)



AUT School of Art and Design, City Campus

ART AND DESIGN

The School of Art and Design is one of New Zealand's largest providers of art and design education. Areas of specialisation include fashion, printing, digital design, graphic design, spatial design, visual arts, computer publishing and fabric printing. We have close links with industry to ensure that our qualifications are relevant and meet the needs of employers. The School of Art and Design has a leading reputation for research in the fields of visual arts, design, fashion, and critical theory.

DEGREES AND GRADUATE DIPLOMAS

Degrees are three years' full-time study unless specified otherwise.

BACHELOR OF DESIGN MAJORS:

- Fashion
- Graphic Design
- Spatial Design
- Product Design
- Textiles For Fashion
- Digital Design

Bachelor of Visual Arts

GRADUATE DIPLOMAS

Graduate Diploma in Computer Publishing and Design (1 year)

POSTGRADUATE STUDY

Bachelor of Art and Design (Honours) (1 year)

Master of Art and Design (2 years)

Master of Design (1 year)

Master of Arts Management (1 year)

Master of Philosophy (1 year)

Doctor of Philosophy (3 years)

Doctor of Design (3 years)

CERTIFICATES AND DIPLOMAS

Diploma in Graphic Communication (2 years)

Diploma in Applied Fashion Technology (2 years)

Certificate in Art and Design Intermediate (1 year)

COMMUNICATION STUDIES

The School of Communication Studies programmes prepare you for a career in print, broadcast and new media. Designed in consultation with media and communications professionals, the programmes will provide you with a thorough grounding in theory, analysis and techniques.

Real working environments for students include:

- A television studio complex
- On-air FM radio station
- Digital Media laboratories
- Radio workstations and a radio production room
- Public Relations laboratory
- Newsroom
- Advertising creativity studio

DEGREES AND GRADUATE DIPLOMAS

Degrees are three years' full-time study unless specified otherwise.

BACHELOR OF COMMUNICATION STUDIES MAJORS:

- Advertising Creativity
- Public Relations
- Creative Industries
- Journalism
- Digital Media
- Radio
- Television

GRADUATE DIPLOMAS

Graduate Diploma in Advertising Creativity (1 year)

Graduate Diploma in Communication and Public Relations (1 year)

Graduate Diploma in Journalism (1 year)

Graduate Diploma in Digital Media (1 year)

POSTGRADUATE STUDY

Master of Communication Studies (2 years)

Master of Creative Writing (1 year)

Postgraduate Diploma in Communication Studies (1 year)

Bachelor of Communication Studies (Honours) (1 year)

Master of Philosophy (1 year)

Doctor of Philosophy (3 years)

CERTIFICATE

Certificate in Communication Studies (1 year)

CREATIVE TECHNOLOGIES

DEGREES

Bachelor of Creative Technologies (3 years)

POSTGRADUATE STUDY

Bachelor of Creative Technologies (Honours) (1 year)

Master of Creative Technologies (1 year)



AUT Business School, City Campus



JUAN PABLO FERNANDEZ, MEXICO CITY, MEXICO

Bachelor of Business (Marketing and Tourism)

I heard about AUT through an agency in Mexico and decided to come to AUT because it is recommended internationally and, according to locals, is the best university for business programmes in New Zealand.

The amiability of the staff was crucial in my decision to study at AUT and I find my lecturers all very professional and approachable and willing to help out. My classes are enjoyable, worthwhile and challenging. I love the friendly environment, great facilities, convenient location and multi-cultural life AUT has to offer.

Things I most enjoy about living in Auckland are the high quality of life, the multi-national environment, the wide range of recreational activities – including beaches, parks, nearby islands and bars, restaurants and cafes. I love New Zealand's 'green' approach to life and the magnificent landscapes you can find in almost every corner of the land. The Maori culture is extremely interesting as well. It's been a great experience so far!

AUT Business School is one of the largest business schools in New Zealand, offering an extensive range of programmes from undergraduate, to postgraduate, to MBA. Our focus is on preparing graduates for professional and personal success. That's why all our programmes have a 'real world' approach, with the emphasis on applied learning. Our programmes are structured to give businesses what they want and our graduates what they need to succeed in the business world. The School has one of the highest graduate employment rates in New Zealand – 95% of our Bachelor of Business graduates are employed within six months. The Business School has two research centres – the Centre for Corporate Governance and the Centre for Work and Labour Studies, along with a Gender and Diversity Research Interest Group.

DEGREES AND GRADUATE DIPLOMAS

Degrees are three years' full-time study unless specified otherwise.

The Bachelor of Business is made up of three phases, including a foundation phase, a choice of majors and workplace learning. The degree is structured to allow students to choose one or two majors of their choice.

CO-OPERATIVE EDUCATION

As a Bachelor of Business student you will learn outside the classroom by undertaking a work placement. You will spend one semester with an organisation undertaking ongoing work or a special project that is related to your major. Co-op can be taken anywhere in New Zealand or overseas. You will have a workplace supervisor and an AUT academic mentor to guide you in your work placement. Generally you will be paid for your work placement – this will be negotiated between you and your organisation.

BACHELOR OF BUSINESS MAJORS:

- Accounting
- Advertising
- Business Economics
- Commercial Law
- Design
- eBusiness
- Finance
- Human Resource Management and Employment Relations
- Information Technology
- International Business
- Management
- Marketing
- Sales
- Tourism

CONJOINT DEGREES

Students study two degrees concurrently – designed for students with above-average academic records. Duration is four years' full-time study.

- Bachelor of Business + Bachelor of Applied Science
- Bachelor of Business + Bachelor of Arts (Applied)
- Bachelor of Business + Bachelor of International Hospitality Management
- Bachelor of Business + Bachelor of Health Science
- Bachelor of Business + Bachelor of Sport and Recreation
- Bachelor of Computer and Information Sciences + Bachelor of Business

GRADUATE DIPLOMA

- Graduate Diploma in Business (1 year)

POSTGRADUATE STUDY

- Bachelor of Business (Honours) (1 year)
- Master of Professional Business Studies (1 year)
- Postgraduate Diploma in Business (1 year)
- Master of Business (2 years)

MASTER OF BUSINESS ADMINISTRATION (MBA)

The Master of Business Administration is designed for people aspiring to general or divisional management or chief executive positions. It is flexible and tailored to provide exactly what you need in today's fast-moving business environment.

- Master of Business Administration (18 months)
- Postgraduate Diploma in Business Administration (1 year)

MBA has 6 intakes – Jan/Mar/May/Jul/Aug/Oct

CERTIFICATES AND DIPLOMAS

- Diploma in Business (1 year)
Students are required to have UE to gain entrance this programme
- Certificate in Business
One semester and one year pathway contributing 30 points towards the 360 point Bachelor of Business



City Campus

The Faculty of Applied Humanities encompasses the schools of Languages and Social Sciences, Education, and Hospitality and Tourism. The Faculty prides itself on the application of knowledge to the lives of individuals, families and communities. Our strength is in areas such as sociolinguistics, culture and discourse studies, migrant and refugee resettlement, hospitality and tourism, public and social policy, human services and education. In these areas we are challenging the status quo and seeking ways to deliver real-world improvements to people's lives.

LANGUAGES

The departments of Community and International Languages and Applied English Studies will develop your powers of communication and equip you with a qualification that crosses borders and breaks down barriers. Whether you are planning a career in New Zealand or overseas, in business or the community, the School of Languages and Social Sciences can help you achieve your aim.

DEGREES AND GRADUATE DIPLOMAS

Degrees are three years' full-time study unless specified otherwise.

BACHELOR OF ARTS MAJORS:

- English Studies
- Japanese
- Chinese
- Creative Writing

Bachelor of Arts (Honours) in Applied Language Studies *(1 year)*

Graduate Diploma in Arts *(1 year)*

CONJOINT DEGREES

Bachelor of Arts + Bachelor of Business *(4 years)*

Bachelor of Arts + Bachelor of Computer and Information Sciences *(4 years)*

POSTGRADUATE STUDY

Master of Arts in Applied Language Studies *(2 years)*

Master of Adult Literacy and Numeracy Education *(1 year)*

Postgraduate Diploma in Arts *(1 year)*

CERTIFICATES AND DIPLOMAS

Diploma in Chinese *(2 years)*

Diploma in Japanese *(2 years)*

Diploma in Interpreting and Translation *(1 year)*

Diploma in Sign Language Interpreting *(2 years)*

Certificate in New Zealand Sign Language and Deaf Studies *(1 year)*



GILLIAN PAYNE, ONTARIO, CANADA
Graduate Diploma in Secondary Teaching

I had always wanted to visit New Zealand, because I had heard so much about the beautiful landscape here. I was trying to find a university that offered Drama as a teachable programme and also took mid-year intakes. AUT had both.

I like the variety in my programme. I am in school for four weeks and then I do a placement at a high school for four weeks. It keeps things interesting. Also my classes are only in the mornings allowing me flexibility to work and also get out and enjoy New Zealand. It is a good school/life balance.

My lecturers are wonderful and caring. They are passionate about what they do, professional and very approachable and helpful. The classes are informative and interesting, with a good balance between group work, lecturing and discussion. You really feel supported by the lecturers; they really want the best for you.

TREVOR SMALL, ONTARIO, CANADA
Graduate Diploma in Secondary Teaching

I'm in my first year studying at AUT. I decided to come to AUT because it offered me flexibility with regard to my start date, along with the programme I wanted to study in a beautiful country that I wanted to see.

I'm in a class of 30 students where the focus is on sharing experiences and ideas. The classes are very discussion-based, which encourages questioning and opinion in a comfortable, communal learning environment. The teachers are passionate with a desire to share their success and experiences. They treat us as professionals and challenge us to operate from a 'best practice' perspective.

I love living in Auckland – it has the big city feel without the big city hassles. Transit is easy whether by bus, car, or on foot. It is an accessible city and a great jumping-off point for seeing the rest of the country.

New Zealand is one of the most gorgeous countries I have ever seen. Every weekend can be an adventure.



SOCIAL SCIENCES

Social Sciences provide much of the core knowledge for the growth area in the jobs of the future – in human services, social research, administration policy, criminology, research, advocacy, management, and across the public, not-for-profit and private sectors.

DEGREES AND GRADUATE DIPLOMAS

Degrees are three years' full-time study unless specified otherwise.

BACHELOR OF ARTS MAJORS:

- Social Sciences
- Psychology
- Conflict Resolution
- Criminology

CONJOINT DEGREES

Bachelor of Arts + Bachelor of Business (4 years)
Bachelor of Arts + Bachelor of Computer and Information Sciences (4 years)

GRADUATE DIPLOMA

Graduate Diploma in Arts (1 year)

POSTGRADUATE STUDY

Bachelor of Arts (Honours) in Social Sciences (1 year)
Postgraduate Diploma in Arts (1 year)
Master of Arts – Children and Public Policy, Social Sciences, Human Services and Social Policy (2 years)

CERTIFICATES

Certificate in Social Sciences (1 year)
Certificate in Conflict Resolution (1 year)

EDUCATION

The School of Education offers early childhood, primary, secondary adult and tertiary education programmes at a variety of entry levels. In line with our vision, we have developed additional teacher-education programmes with a difference – in Montessori, Pasifika and Steiner.

DEGREES AND GRADUATE DIPLOMAS

Degrees are three years' full-time study unless otherwise specified.

BACHELOR OF EDUCATION MAJORS:

- Early Childhood Teaching
- Montessori Early Childhood Teaching
- Steiner Early Childhood Teaching
- Montessori Primary Teaching
- Steiner Primary Teaching

GRADUATE DIPLOMAS

Graduate Diploma in (Specialty) Education (1 year)
Graduate Diploma in Secondary Teaching (1 year)
Graduate Diploma in Tertiary Teaching (1 year)
Graduate Diploma in Career Development (1 year)
Graduate Diploma in Arts (1 year)

POSTGRADUATE STUDY

Bachelor of Arts (Honours) in Education (1 year)
Postgraduate Diploma in Education (1 year)
Master of Education (2 years)
Master of Educational Leadership (1 year)
Master of Career Development (1 year)

CERTIFICATES & DIPLOMAS

Certificate in (Specialty) Education (1 year)
National Diploma in Teaching (3 years)



Te Ara Poutama Building, City Campus

HOSPITALITY AND TOURISM

Hospitality and tourism are in an exciting growth phase, with great employment opportunities in both the local and international marketplace. Training facilities at the School of Hospitality and Tourism are among the best in Australasia. Students can interact with the New Zealand Tourism Research Institute, based at AUT. The Institute brings together experts in the tourism and hospitality arena to develop timely and innovative research solutions for the tourism industry and those who depend on it.

DEGREES

Degrees are three years' full-time study unless otherwise specified.

Bachelor of International Hospitality Management
Bachelor of Tourism Studies

CONJOINT DEGREES

Bachelor of International Hospitality Management +
Bachelor of Business (4 years)

POSTGRADUATE STUDY

Master of International Hospitality Management (2 years)
Master of Professional Hospitality Studies (1 year)
Master of Tourism Studies (2 years)
Postgraduate Diploma in International Hospitality Management (1 year)
Postgraduate Diploma in Tourism Studies (1 year)

CERTIFICATES AND DIPLOMAS

Diploma in Travel and Tourism (2 years)
Diploma in Hospitality Management (2 years)
Diploma in Patisserie (2 years)
Diploma in Event Management (1 year)
Diploma in Culinary Arts (2 years)
Certificate in Practical Patisserie (1 year)
Certificate in Hospitality and Tourism (1 year)

TE ARA POUTAMA (MAORI STUDIES)

Te Ara Poutama delivers Maori values within a relevant and modern context. AUT offers one of the most supportive Maori faculties in Aotearoa-New Zealand. Programmes are taught from a Maori perspective but identify and value the identity of all people.

DEGREES AND GRADUATE DIPLOMAS

Bachelor of Maori Development (3 years)

BACHELOR OF ARTS MAJORS:

→ Maori Development

CONJOINT DEGREES

Bachelor of Arts + Bachelor of Business (4 years)
Bachelor of Arts + Bachelor of Computer and Information Sciences (4 years)

GRADUATE DIPLOMAS

Graduate Diploma in Arts (1 year)

POSTGRADUATE STUDY

Master of Arts – Maori Development, Youth Development (2 years)

PRE-DEPARTURE CHECKLIST

- ☐ Organise your student visa – contact the NZ High Commissioner or the embassy in your home country to obtain an application form
- ☐ Ensure your passport is valid for your intended length of study in NZ
- ☐ Start looking for accommodation – for helpful advice visit www.autinternational.info
- ☐ Pack a document folder containing your Offer of Place letter, academic transcripts from previous study, identification documents etc
- ☐ Organise to have at least \$2000 available to you on arrival in Auckland
- ☐ Have a medical, optical and dental check-up and organise any prescribed medicine required
- ☐ Write down contact details of your country's embassy in New Zealand
- ☐ Write down the number of AUT's emergency contact number for international students: 021 774 570

CODE OF PRACTICE FOR THE PASTORAL CARE OF INTERNATIONAL STUDENTS

CODE: AUT has agreed to observe and be bound by the Code of Practice for the Pastoral Care of International Students published by the Ministry of Education. Copies of the Code are available on request from the Institution or from the New Zealand Ministry of Education website at www.minedu.govt.nz/goto/international

IMMIGRATION: Full details of visa and permit requirements, advice on rights to employment in New Zealand while studying, and reporting requirements are available through the New Zealand Immigration Service and can be viewed on its website at www.immigration.govt.nz

ELIGIBILITY FOR HEALTH SERVICES: Most international students are not entitled to publicly-funded health services while in New Zealand. If you receive medical treatment during your visit, you may be liable for the full costs of the treatment. Full details on entitlements to publicly-funded health services are available through the Ministry of Health, and can be viewed on its website at www.moh.govt.nz

ACCIDENT INSURANCE: The Accident Compensation Corporation provides accident insurance for all New Zealand citizens, residents and temporary visitors to New Zealand, but you may still be liable for all other medical and related costs. Further information can be viewed on the ACC website at www.acc.co.nz

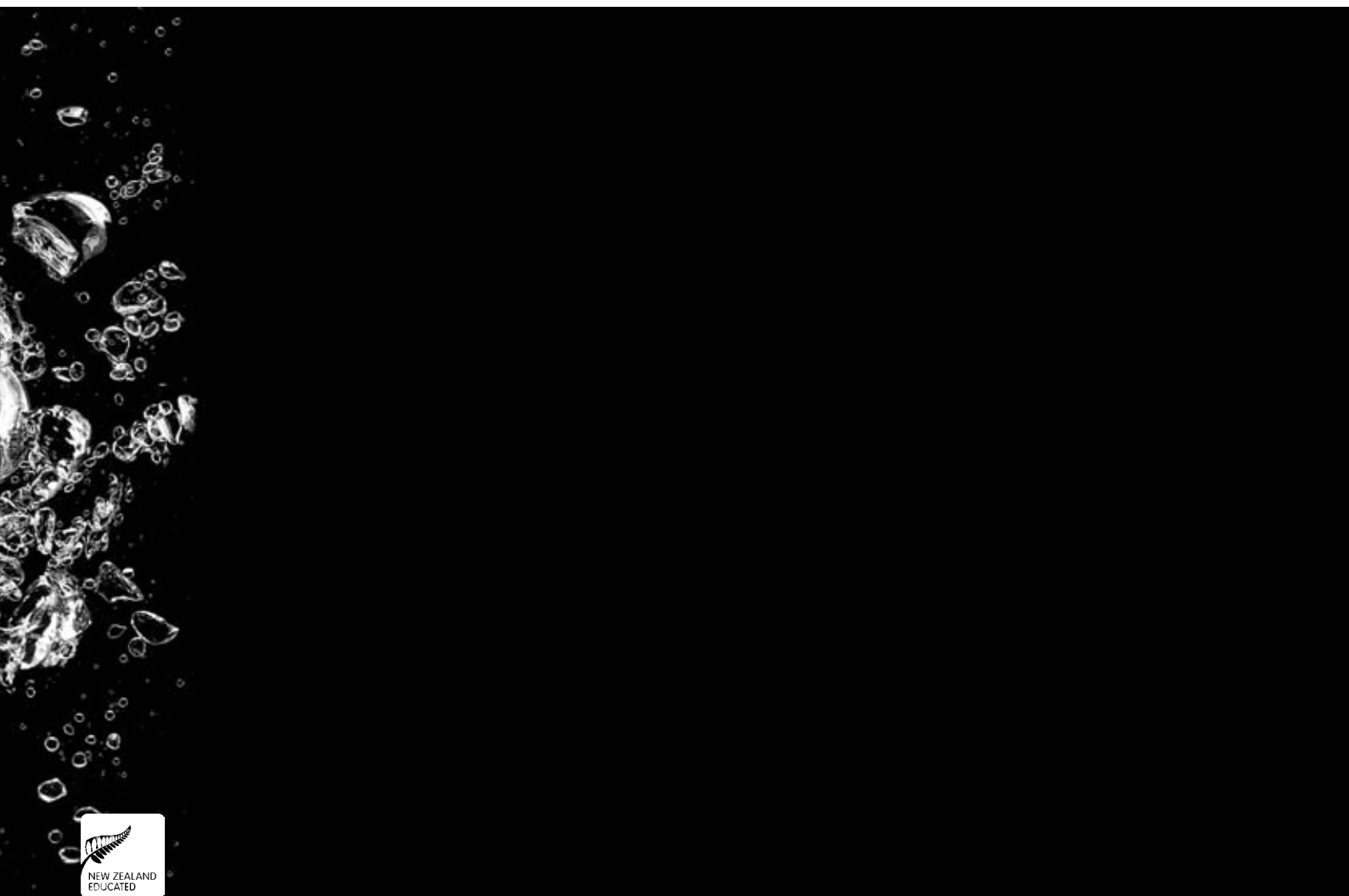
MEDICAL AND TRAVEL INSURANCE: International students must have appropriate and current medical and travel insurance while studying in New Zealand.

It is a requirement for all international students studying at AUT to have comprehensive medical and travel insurance cover. Students can either have the cover arranged by the University or produce evidence at the time of application that they have insurance cover from another company that meets the approval of AUT.

The information in this publication was correct when it was printed. However, since AUT University strives to improve its programmes and make sure that they meet industry and employer needs, the University reserves the right to make alterations to the information contained in this publication without prior notice. The University may at any time and at its own discretion withdraw a programme or paper from offer. AUT reserves the right to change fees, terms and conditions both before and after students' admission.



Meet our cover students: Julia Schultze Forsthoel (Germany) Mayte Sanudo (Mexico) Jia Bo Hua (China) and Trevor Small (Canada)



International Centre
AUT University
Private Bag 92006, Auckland, 1142, New Zealand

Phone: 64 9 921-9637

Fax: 64 9 921-9925

email: international.centre@aut.ac.nz

www.autuni.ac.nz